

Lincoln Middle School Family Handbook

****Addendum to Pullman Public Schools
Family & Student Handbook*

2024-2025



Lincoln Middle School
*315 SE Crestview St.
Pullman, WA 99163
(509) 334-3411*



Pullman School District
*240 SE Dexter St.
Pullman, WA 99163
(509) 332-3581*



Greetings LMS Spartans and Spartan Families!

WELCOME to the new school year! You are a significant member of the Spartan family – some of the best middle school people in the state of Washington.

As a student at Lincoln Middle School, this should be a year of exploration, learning and growth. It will hopefully be exciting, challenging, fun, and packed full of opportunity and positive experiences.

Our goal is to make your school experiences memorable and enjoyable. We care about each of you! We will do our best and ask you to do the best you can for yourself, for others, and for your school. This means you can and should feel proud of everything you do.

To help you become informed of policies and expectations, this Spartan Family Handbook is provided for you. In order to help you become organized and improve your study skills, this handbook includes a Middle School Agenda with space for daily assignments and communication between home and school. You are expected to keep this handbook in your three-ring binder and to use it throughout the school year. Information is provided here for nearly every situation. Following rules and procedures is required; appropriate behavior and respect for others is expected at all times.

YOU ARE AN LMS SPARTAN!
Best wishes to you for a great school year!

Sincerely,

Lincoln Middle School Faculty and Staff

LINCOLN MIDDLE SCHOOL

315 SE Crestview St.
Pullman, WA 99163

(509) 334-3411
Fax (509) 336-7203

Cameron Grow, *Principal*
Tammy Sewell, *Assistant Principal*

LMS.PullmanSchools.org

The Pullman School District Board of Directors and the Pullman School District shall provide equal educational opportunity and treatment for all students in all aspects of the academic and activities programs without regard to race, religion, creed, color, national origin, age, honorably-discharged veteran or military status, sex, sexual orientation (including gender expression or identity), marital status, the presence of any sensory, mental or physical disability, participation in the Boy Scouts of America or the use of a trained dog guide or service animal by a person with a disability. The district will provide equal access to school facilities to the Boy Scouts of America and all other designated youth groups listed in Title 36 of the United States Code as a patriotic society. District programs will be free from sexual harassment. The following employees have been designated to handle questions and complaints of alleged discrimination: Civil Rights Coordinator and Title IX Coordinator, Assistant Superintendent, (509) 332-3144, and Section 504 Coordinator, Director of Special Services, (509) 332-3144. 240 SE Dexter Street, Pullman, WA 99163. Applicants with disabilities may request reasonable accommodations in the application process by contacting the Personnel Coordinator at (509) 332-3584.

TABLE OF CONTENTS

<u>Students' Rights and Responsibilities</u>	5
<u>Attendance Policy and Procedures</u>	8
<u>Transportation to and from Lincoln Middle School</u>	10
<u>General Student Information</u>	11
<u>Student Activities</u>	17
<u>Disciplinary Policy and Procedures</u>	22
<u>LMS Academic Program</u>	23
<u>Grade 6</u>	24
<u>Grade 7</u>	26
<u>Grade 8</u>	29
<u>School Building Map and Evacuation Plan</u>	32

Lincoln Middle School

#LMS Proud

*“Our **MISSION** is to embrace exciting learning opportunities through meaningful exposure to knowledge and safe exploration of the unknown.”*

*“Our **VISION** is to apply these experiences to develop identity within ourselves, school, families, community, and world.”*

**At LMS, we show we are
P.R.O.U.D.
to be a Spartan in all that we do!!**

It is expected that all students will follow directions of all staff, at all times, in all areas.

Positive:

- Interact positively with everyone.

Respectful:

- Respect the property of others and the rights other students have to learn and to be safe.
- Respect the rights of adults to do their jobs.
- Take full responsibility for your own actions.
- Leave no trace – pick up after yourself.

On Time:

- Be where you are supposed to be, on time and ready to learn.

Unified:

- Support all LMS students and staff in being the best they can be.
- Be considerate of everyone.

Daring:

Take positive risks. For example:

- Answer a question, even if you are unsure your answer is correct.
- Say hello to someone you do not know.
- Help those in need.
- Stand up for what is right.

LINCOLN MIDDLE SCHOOL

STUDENTS' RIGHTS AND RESPONSIBILITIES

STUDENT GUIDELINES FOR BEING AT SCHOOL

1. Arrive on time! Students are allowed in the halls at 8:10 a.m. Tuesday through Friday, and at 8:40 a.m. on late start Mondays. Students may enter the commons at 7:45 a.m. Tuesday through Friday, and at 8:20 a.m. on late start Mondays. School begins at 8:30 a.m. on Tuesday through Friday, and at 9:00 a.m. on late start Mondays. Students attending before-school activities may enter through the front or library entrances.
2. Leave on time! Students should be clear of the halls by 3:15 p.m. unless they are participating in a supervised activity. The building will be locked at 4:00 p.m. unless there are scheduled activities.
3. After school activities require adult supervision at school and are scheduled in specific locations. Students are expected to remain in the assigned locations.

BEHAVIOR EXPECTATIONS

Lincoln Middle School students are expected to act in such a manner as to enable themselves to acquire the best education possible while attending Lincoln Middle School. Lincoln Middle School students should avoid any behavior that is disruptive to the educational process and harmful to themselves, fellow students, or the order of the school.

All students have a right to learn at Lincoln Middle School, and all teachers have the right to teach. Violent threats or such behavior will result in emergency expulsion from Lincoln Middle School.

RIGHTS, AUTHORITY, AND RESPONSIBILITIES OF TEACHERS AND STAFF

All school district staff shall have the right to expect students to comply with school rules and maintain good order in the classroom, in the school, on the playgrounds or other common areas of the school while riding on the school buses, on field trips, and at all school sponsored activities. All school employees of the school district shall possess the authority to impose discipline upon a student for misconduct which is within the established building procedures.

STUDENTS' RIGHTS AND RESPONSIBILITIES

A summary of Pullman School District board [Policy 3241](#):

The Pullman School District provides students with a safe, healthy, and educationally sound environment. Students are expected to be aware of and comply with this policy and procedure, including behavioral expectations that respect the rights, person, and property of others. As citizens of the school community, students are expected to comply with the rules and regulations of the school. Students and staff are expected to work together to develop a positive climate for learning, consistent with Board Policy [3112 – Social Emotional Climate](#).

STUDENTS' RIGHTS

No student shall be unlawfully denied an equal educational opportunity or be unlawfully discriminated against because of national origin, race, religion, economic status, gender, pregnancy, marital status, sexual orientation, previous arrest, previous incarceration or physical, mental or sensory handicap. Subject to reasonable limitations upon the time, place and manner of exercising such rights, and the recognized needs of the

educational process, students shall have the right to:

- Expect the maintenance of high educational standards in the district.
- Have physical and emotional safety while at school.
- Have safe buildings and sanitary facilities.
- Consult with teachers, counselors, and administrators.
- Be informed of rules and regulations as related to the rights and corresponding responsibilities.
- Be involved in school activities provided that all qualifications are met.
- Have the right of expression and assembly consistent with the maintenance of an orderly and efficient educational process and the limitations imposed by law.
- Have the freedom of speech and press, peaceably assemble, petition the government, free exercise of religion, and have their schools free from sectarian influence.
- Expect fair and just treatment from school employees.
- Be secure in their persons, papers, and effects against unreasonable searches and seizures.
- Gain an education consistent with stated district goals.
- Know the requirements of the course of study and know on what basis grades will be determined.
- Obtain citizenship as delineated in the United States Constitution and its amendments.

The enumeration of these rights shall not be construed to deny other rights set forth in the Constitution and the laws of the State of Washington or the rights retained by the people.

STUDENTS' RESPONSIBILITIES

All rules apply to all active students at all times when on school grounds. All rules apply to all students when within reasonable proximity to school grounds before regular school hours, during regular school hours and following regular school hours. The rules apply to all students on school grounds at any time when the school is being used by a school group as well as off school grounds on school buses, at a school activity, function, or event. The school rules also apply to all students off school grounds when the prohibited behavior is a consequence or is directly related to causes or events that originated on school grounds. Whenever student behavior has a real and substantial effect on the lawful maintenance and operation of the school district, including the health and safety of the students, employees and/or the process of learning, discipline may be assigned.

Students have the responsibility to:

- Pursue their required course of studies.
- Attend school daily and be on time for class.
- Be aware of and comply with all rules governing student behavior.
- Comply with the authority of school district personnel.
- Express their ideas in a respectful manner.
- Dress in a manner which is not disruptive to the educational process.
- Behave in a manner that will not disrupt a student's education nor deprive others of an education.
- Respect the rights of others.
- Exercise self-discipline.
- Follow established procedures in seeking to change policies, rules or regulations.
- Identify themselves upon request, to any school district personnel or authorities on school property or a school sponsored event.
- Abstain from the use/possession of tobacco products.
- Abstain from the use, possession, sale, distribution, trade, and/or transfer of alcohol, illegal and/or other mind altering drugs or substances (or that which purports to be) or paraphernalia. Medicine properly prescribed and used in accordance with the provisions of the Pullman School District Medications Policy/Procedure #3416 is exempt from this provision.

- Avoid possessing, handling or transmitting weapons.
- Have a hall pass at all times when walking the halls during class time, before hallways are open in the morning, or during lunch periods.
- Keep cell phones turned off and stored in lockers during the school day.
- Exhibit good digital citizenship, and use technologies in a responsible and ethical manner. Refrain from cyberbullying, inappropriate use, and other misuses of the Internet. Students must assume that none of their data is private or confidential when using the district's network or district owned equipment.

BASIC BUILDING RULES

1. **Respect Persons and Property.** Regard for others' rights, feelings, safety, and property is expected. Disregard of persons or property will be cause for disciplinary action. Students and their parents are expected to repay and/or replace lost or damaged property.
2. **Follow All Lawful Directions and Requests of the Staff.** The staff includes teachers, paraprofessionals, administrators, secretaries, custodians, cooks, bus drivers, and any adult supervisors.
3. **All students are to be on time to class.** Promptness to every class is expected. Students who are late upon arriving to school must have a note from parents. Teachers detaining any student after class should supply the student with an admit slip to his/her next class. Students' tardies are noted. School discipline will be given to students who have more than 2 tardies in a week.
4. No hoods shall be worn in the building.
5. Music players, cell phones, smart watches, and video games may only be used before or after school.
6. Cell phones, headphones, smart watches and other communication devices must be turned off and stored in lockers during the school day. No student should use a cell phone or other technology to harass or to access inappropriate material. This includes the filming of other students with phones without their permission.
7. All backpacks and book bags are to be kept in lockers during school hours. If a locker is not available a space will be assigned to accommodate the student's belongings.
8. Profanity is neither acceptable nor permitted at LMS. Unacceptable language will result in school discipline.
9. All students must have a hall pass when in the hallways during class and during lunch times.
10. Students are to avoid public displays of affection including handholding, kissing and repetitive hugging.
11. Line cutting is not allowed (lunchroom, bus loop, etc.)
12. Students are to obey all local, state and federal laws. Failure to do so will result in a police report in addition to the listed school consequences.
13. Aerosol containers (Axe, cologne, spray paint, etc.) and glass drink bottles are not permitted on school property.
14. Food and Drink allowed in the commons only. Water bottles are allowed in halls and classes.
15. No energy drinks allowed on school campus, such as; Monster, RockStar, Redbull, etc.
16. Students should not bring toys to school.

BASIC CLASSROOM RULES

1. Students will bring all necessary materials to class, including a charged Chromebook.
2. Students will enter the classroom in a quiet manner. Students are to be in their assigned location and ready to learn before the tardy bell rings.
3. Students are to follow directions from teachers or other staff members.
4. Students are expected to display respectful behavior at all times.
5. Students are not allowed to eat or drink in the classroom without teacher permission.
6. Students will treat substitute teachers with the utmost respect. School discipline may be given to students who do not adhere to this standard.

LINCOLN MIDDLE SCHOOL ATTENDANCE POLICY

FROM PULLMAN SCHOOL DISTRICT BOARD POLICY 3122 and Procedure 3122P

EXCUSED AND UNEXCUSED ABSENCES FROM SCHOOL

Regular and punctual attendance is a habit that is indicative of a student's attitude toward school and which will follow into the student's career and other responsibilities throughout life. The school and parents must work cooperatively by making regular and punctual attendance a top priority. The responsibility for school attendance belongs with parents and guardians. The following shall govern the development and administration of attendance procedures within the district. Students involved in extracurricular activities are responsible for picking up assignments from their instructors when leaving early for school-related activities.

EXCUSED ABSENCE: Absences due to illness, health condition, medical appointment, family emergency, religious observance, family emergencies, as required by law, and as outlined in policy 3122, shall be excused. An excused absence shall be verified by the parent or school authority responsible for the absence.

UNEXCUSED ABSENCE: Unexcused absences fall into two categories: 1) The parent, guardian, or adult student submits an excuse that does not meet the definition of an excused absence as defined previously; or 2) The parent, guardian, or adult student fails to submit any type of excuse statement, whether by phone, email or in writing, for an absence. Unexcused absences are a violation of school rules; therefore, a student who has an unexcused absence is subject to discipline. RCW 28A.225.020 defines the school's responsibility in filing truancy petitions (a Becca Petition) when a student has 7 unexcused absences in one month or 15 in the current school year and the school can document an effort to contact parents and remedy the situation without court intervention. Truancy petitions are filed with the Superior Court of Washington for Whitman County Juvenile Department in compliance with RCW 28A.225. Students arriving late to school without an excused note or phone call are considered truant.

TARDIES: Students are tardy when they arrive to class after the bell signaling the start of class. Unexcused tardies are recorded. School discipline will be given to students who have more than 2 tardies in a week.

MISSED ASSIGNMENTS: If an absence is excused, the student shall be permitted to make up all missed assignments outside of class under established conditions and time limits as determined by the appropriate teacher. A student's regular attendance and/or participation is required to fulfill the instructional objectives and requirements of all courses.

- Excused absences up to 10 days per quarter allow the student one calendar day per absence time to make up missed assignments without reduction in grade or score.

ABSENCES AND TARDINESS

Students are expected to attend all assigned classes each day. Teachers shall report absences and tardiness to the office where records are maintained. *Chronic excused absences are a concern especially when the student's grades are affected.* The concern will be addressed and appropriate action will be taken.

EXCUSED ABSENCES: The following are valid excuses for absences and tardiness. Assignments and/or activities not completed because of an excused absence or tardiness may be made up in the manner provided by the teacher.

1. Physical health or mental health symptoms, illness, health condition or medical appointment for the student or person for whom the student is legally responsible. Examples of symptoms, illness, health conditions, or medical appointments include, but are not limited to, medical, counseling, mental health wellness, dental, optometry, pregnancy, and behavioral health treatment (which can include in-patient or outpatient treatment for chemical dependency or mental health);
2. Family emergency, including, but not limited to, a death or illness in the family;
3. Religious or cultural purpose including observance of a religious or cultural holiday or participation in religious or cultural instruction;
4. Court, judicial proceeding, court-ordered activity, or serving on a jury;
5. Post-secondary, technical school or apprenticeship program visitation, or scholarship interview;
6. State-recognized search and rescue activities consistent with [RCW 28A.225.055](#);
7. Absence directly related to the student's homeless, or foster care/dependency status;
8. Absences related to deployment activities of a parent or legal guardian who is an active duty member consistent with [RCW 28A.705.010](#);
9. Absences due to suspensions, expulsions, or emergency expulsions imposed pursuant to chapter [392-400 WAC](#) if the student is not receiving educational services and is not enrolled in qualifying "course of study" activities as defined in [WAC 392-121-107](#);
10. Absences due to student safety concerns, including absences related to threats assaults, or bullying;
11. Absences due to a student's migrant status, and
12. An approved activity that is consistent with district policy and is mutually agreed upon by the principal or designee and a parent, guardian, or emancipated youth. The procedure for requesting an excused absence for a mutually agreed upon activity can be found in procedure [3122P Excused and Unexcused Absences](#).
13. Absences due to the student's lack of necessary instructional tools, including internet access or connectivity.

Notifying LMS about Absences: A Parent/Guardian is expected to notify the school office at the earliest convenience by calling the LMS office, **(509) 334-3411 before 8:30 a.m.** Unless prior arrangements have been made, student homework will not be collected until the third consecutive day of an extended absence.

Appointments during the school day require that the student obtain a pass to leave the classroom and school building from the office prior to the beginning of first period. The student should have a note from parents (or a phone call to the office) indicating the time when the student is to be dismissed from class.

Participation in school-approved activities (academic competition, artistic performance, etc.) must be authorized by a school or staff member.

Pre-Approved Absences: When a student plans to be out of school for one or more days, he/she is to obtain an **ADVANCED NOTICE OF ABSENCE FORM** from the attendance office at least two days prior to the absence. Signatures of teachers, parents, and the principal are also requested. The absence shall be counted as excused for the purposes noted on the form, if approved by the principal. An absence may not be approved if it causes a serious adverse effect on the student's educational progress.

Absence resulting from disciplinary actions or Short-Term Suspension: As required by law, students who are removed from a class or classes as a disciplinary measure or students who have been placed on short-term or long-term suspension will have the right to make up assignments or exams missed during the time they were denied entry to the classroom.

Extended illness or health condition: If a student is confined to home or hospital for an extended period, the school shall arrange for the accomplishment of assignments at the place of confinement whenever practical. If

the student is unable to do his/her schoolwork, or if there are major requirements of a particular course that cannot be accomplished outside of class, the student may be required to take an incomplete or withdraw from the class without penalty.

Excused absence for chronic health condition: Students with a chronic health condition that interrupts regular attendance may qualify for placement in a limited attendance and participation program. The student and his/her parent shall apply to the principal or counselor, and a limited program shall be written following the advice and recommendations of the student's medical advisor. The principal shall approve the recommended limited program. Staff shall be informed of the student's needs, though the confidentiality of medical information shall be respected at the parent's request.

TRANSPORTATION

IN CITY LIMITS ROUTES

Students who live in Pullman city limits may sign-up for a free city bus pass. A student bus pass allows students under the age of 18 to use Pullman Transit public bus services for free at any time during the year. Bus routes can be found printed in hard copy at LMS, or on the Pullman Transit website www.pullman-wa.gov/services/transit/index.php

RURAL BUS ROUTES

Students who live outside of the Pullman city limits are assigned to a rural school bus. Bus routes are available on the district website at www.PullmanSchools.org/departments/bus or you may call the school district transportation office at (509)334-3911.

PEDESTRIANS AND BIKE RIDERS

Students who walk to and from school should follow pedestrian walkways, sidewalks and crosswalks. Bike riders should know and obey all traffic rules related to riding a bicycle in traffic. Bikes are to be locked to the bike racks located on the west and east sides of the building. They are not allowed in the building, nor stored next to the building for any reason.

SKATEBOARDS/SCOOTERS

Due to safety concerns at Lincoln Middle School, students will **not** be permitted to ride skateboards or scooters on school grounds. If a student chooses to ride to school by way of these devices they will need to walk with them, in hand, once on school grounds. School will determine a designated storage area for skateboards and scooters while at school.

GENERAL STUDENT INFORMATION

BREAKFAST AND LUNCH AT LMS

Breakfast is served at Lincoln starting at 8:00 a.m. Tuesday through Friday, and at 8:30 a.m. on late start Mondays. There are two lunch periods at Lincoln Middle School. See the Daily Schedule for lunch times. Together the students can create an enjoyable experience during breakfast and lunch time with the opportunity to socialize and become involved in recreational activities.

Students may bring sack lunches from home or purchase meals from the school. Specific lunch prices for the 2024-2025 school year were: \$3.50 for a complete student lunch, \$5 for a complete adult lunch and \$.50 for milk. Breakfast is \$2.25 for students and \$3 for adults. **Specific lunch prices for the 2025-2026 school year are to be determined.** Students are allowed to bring carbonated soft drinks, excluding energy drinks, and only single serving sized containers, please, for lunch in non-breakable containers. Glass containers are not allowed in the lunchroom or anywhere else in the school at any time.

LMS uses an automated system for cashiering the meals program. Account numbers are assigned to students. Any amount of money parents choose to send for their children's accounts is processed. As each student eats, the cost of that lunch or breakfast is deducted from his/her balance. Parents may still send cash with their child each day, but are encouraged to use their students account to provide flexibility of eating breakfast or lunch depending on the menu and the student's needs. **Checks should be made to Lincoln Middle School** and include the name of the student to whom the credit should be given. Students should take all lunch money to the cooks in the kitchen. A verbal reminder will be given to students as they get to a zero balance. Parents can view their child's lunch account through the Skyward Family Access System at <http://family.pullman.wa-k12.net>. Lunch account negative balance notifications will be sent to families via email and ParentSquare. If you don't already have your login information, you can get this information from the front office. We can now process lunch payments online through [InTouch Online payment systems](#). For more information, please see our website or call our main office.

A reduced price and free meal program is available for qualifying families. Please ask at the LMS office for the proper forms. Any child qualifying for free lunch also qualifies for free breakfast.

Students eat in the LMS commons. They are expected to help keep the cafeteria clean by being responsible for putting away their own trays and picking up their litter around their lunch tables or upon being asked by a supervisor. Students throwing food, littering or not putting trays away will be assigned a lunch detention.

LMS Composting program. Here at Lincoln we are very proud of our composting program! The Composting Program at Lincoln Middle School collects the food waste generated from our cafeteria breakfast and lunch meals. Composting is done to: reduce the school's trash sent to the landfill; recycle natural resources which helps reduce greenhouse gas emissions; educate the students and staff about food waste and the benefits of composting; and create a useful product for soil enhancement. The removal of food wastes plus recycling of aluminum, plastic and paper products round out the daily environmental efforts of Lincoln Middle School students and staff, qualifying us as a Level 1 Washington Green School.

RULES DURING BREAKFAST AND LUNCH

1. Students are not to consume beverages or food in the hallways or LMS grounds between classes and before or after school. Offenders who carry food or drinks into the hallways or classrooms may receive lunch detention.

2. No running in the commons during breakfast and lunch.
3. Students will only be allowed on the west side of the school during lunch.
4. Students are required to remain within the area of supervision on the school grounds during lunch period. This includes the commons, library, office lobby, basketball courts and west soccer field. All other areas are off limits during the lunch break. Detention will be given to students who are in off limits areas and/or who do not have a hall pass when walking the halls. For students' safety, we must know where they are at all times.
5. When students finish eating, they may go to the library, to the basketball courts or west field; or they may remain in the commons. Students are not allowed to return to their hall lockers without specific permission. Students working in classrooms during lunch must be accompanied by a teacher or staff person. When a teacher requests a student to come to his/her classroom, the teacher must write hall passes for the students.
6. Basketballs, footballs, frisbees, soccer balls, and other games and equipment are available for check-out by staff monitoring the outside grounds during lunchtimes. Some limitations are placed on the number of specific items to help maintain a safe area for student play. Students are expected to return all items checked out before returning to class.
7. When the bell rings, all play must stop. Balls are not to be thrown or kicked after the bell.

BOOKBAGS AND BACKPACKS

All students' book bags and backpacks are stored in their lockers during the instructional day. Please do not purchase large and/or wheeled backpacks because they will not fit in the lockers.

DRESS CODE

Board [Policy 3224 Student Dress](#) and its accompanying procedure [3224P Student Dress](#) can be found on page 18 of the Pullman School District Family handbook and on our website under Policies and Procedures.

EMERGENCY NUMBERS

Alcohol & Drug Help Line – 1-800-562-1240
Child Abuse Hotline – 1-800-422-4453
Child Protective Services – 1-800-642-5179 or 509-397-4433
Crisis Line – 509-332-1505
Family Help Line – 1-800-932-4673
Palouse River Counseling Services – 509-334-1133

FIELD TRIPS AND ACTIVITY GROUP TRIPS

Students will have the opportunity to travel with school groups to see performances, go on field trips, and represent LMS at regional and state competitions. While traveling on school district vehicles, students are reminded to be responsible for their litter, their behavior, and noise, as well as their safety. Groups who are responsible can look forward to other trips. Some longer field trips will be made on privately owned common carrier vehicles. Respectful and responsible conduct is expected from each Lincoln student. Written Parent Permission forms are required for participation on all off-campus field trips.

OVERDUE & LOST LIBRARY BOOKS

Students receive a reminder note and automatic email from our library system when library book(s) are overdue.

Once books are over one month late they will be considered lost and fines will be added to online accounts in the amount of the cost of the books. All books that remain out at the end of the school year will also be considered lost and fines will be assessed at that time. Accounts may be cleared by returning the book, replacing the book with a copy that you buy (this is the method we prefer), or making payments online through [TouchBase](#). TouchBase may be accessed by going to the LMS website, Quick Links, and then Online payments.

GRADE NOTIFICATION AND PARENT CONTACT

- **FAMILY ACCESS/STUDENT ACCESS:** Pullman School District utilizes an online resource called “[Skyward Family Access/Student Access](#)” which allows parents to check their child’s grades, missing assignments and attendance from their computer at home. Parents may also e-mail teachers directly through Family Access/Student Access. Contact the office for the website address as well and to receive your user name and password. Pullman schools also uses ParentSquare for family communications.
- **REPORT CARDS:** Grade reports will be sent home with each student one to two weeks after the end of the first and third quarters of school. Second and fourth quarter reports will be mailed home one to two weeks after the close of school.

2025-2026 Quarters

- 1st quarter ends.....October 24th
- 2nd quarter ends..... January 23rd
- 3rd quarter ends.....March 27th
- 4th quarter ends.....June 12th

- **PARENT-TEACHER CONFERENCES:** Parent conferences will be held during the week of October 22 – October 24. Parents/guardians may attend the arena conference or request a student specific conference. Parents or teachers may request a conference at this or at any time.

ILLNESS AT SCHOOL

When a student becomes ill at school, they should first notify the teacher in charge and then report to the LMS office. Students will be asked to call a parent to report the illness and ask to go home. A health room is available for emergencies or for short term use until a parent or emergency designee can be reached. Students are not allowed to leave school unless parents or guardians have been contacted and have communicated with school staff members.

IMMUNIZATION

Students attending middle school must meet the following minimum immunization standards in order to attend school:

- **Hepatitis B** – 3 doses, 3rd dose must be on or after 6 months of age.
- **Diphtheria/tetanus/pertussis** – 3 doses with the last doses on or after the fourth birthday.
- **Polio** – 4 doses with the last dose on or after the fourth birthday or 4 doses anytime.
- **Measles/mumps/rubella** – 2 doses with the first given on or after the first birthday and at least 28 days apart.
- **Varicella** – 2 doses on or after 1st birthday.
- **Tdap** – 1 dose after age 11.

All Washington State Public Schools are required to meet the student [immunization guidelines](#) from the Washington State Department of Health. Parents are required a medically verified immunization record for their student.

Medically verified is defined as:

- A Certificate of Immunization Status (CIS) printed from the Immunization Information System (IIS) or from "[MyIR](#)" - databases that medical providers often use, OR;
- A physical copy of the [CIS form](#) with a healthcare provider signature, OR;
- A physical copy of the CIS with accompanying medical immunization records from a healthcare provider verified and signed by a Pullman Public Schools nurse.
- Lifetime immunization records may be attached to a hardcopy CIS for medical verification. To be acceptable, the record must come from a medical source or include the signature of a health provider or a unique healthcare provider stamp).
- If you cannot find record of immunizations, please check with our district nurse, Michelle Hyatt, who can search the WA Immunization Information System (IIS).

Reach out to your student's medical provider to request a copy of their immunization records. Immunization records are required and students will be ineligible to attend school if appropriate records are not provided.

MEDICATION AT SCHOOL:

When it is necessary for a student to take any medication at school, the parents are required to contact the LMS office. Written authorization is required by law. A form regarding instructions and parent permission is available at school and at most area doctors' offices and pharmacies. This form must be signed by both the parent and physician. All medicine must be kept in the office in original containers. School personnel are not responsible for administering dosages without prior instruction and compliance to district health procedures.

INJURY/ILLNESS AND FITNESS/MOVEMENT/SPORTS/HEALTH CLASSES

In order to be excused from a fitness/movement/sports class on days they are in attendance, students must bring a note from a qualified physician. Please see the LMS website and go to Documents & Forms where under forms you will find the "[Participation Limitations for PE/FMS](#)" form that you can have your doctor fill out. They must also bring a release authorizing them to re-enter the class when they are well enough to do so. Students that do not have physician's notes are expected to participate to the extent they are able. The instructors will modify and/or create activities that will help facilitate this participation.

LOCKERS:

Each student will be assigned a hall locker during homeroom. Student athletes may be assigned an athletic locker to use during their sport season. In both cases, students will have a combination lock to protect personal belongings. It is the student's responsibility to guard

the combinations and keep possessions safe. **Students should not give their locker combination to anyone.** If the student's locker opens without working the combination lock or if any other disrepair develops, the problem should be reported to the office as soon as possible. School personnel may check the contents in a student's locker upon reasonable cause at any time. Students are encouraged to leave at home all valuable items not needed in school. Students are to report any missing items as soon as it is noted as missing. Students found kicking or abusing their lockers will be subject to discipline for destruction of school property. Locker clean-outs are scheduled during the school year. Students are expected to keep their lockers clean. **The school cannot assume any responsibility for items left in lockers. Lost or stolen items should be reported to the main office.**

LOST AND FOUND:

Students should turn in all found items. Valuable items should be turned in directly to a staff member or the office. Students who have lost an item should check with the teacher in whose room the item was first lost and check in the LMS office as well as the lost and found. Students are asked to have all personal property and clothing marked permanently with their names. Unclaimed lost and found items will be displayed in the commons on a monthly basis with the remainder being donated to charity over school holidays and breaks.

VIDEO GAMES, TABLETS, EAR PODS, SMARTWATCHES, CELL PHONES:

Students and parents must be aware that these items represent an easy target for theft. Responsibility for the security of these devices rests with the student owner. LMS supervisory personnel will only allow these items to be used before school and after school. The school will not be responsible for any thefts regardless of circumstances. Students are encouraged to leave valuables at home.

FEES

Any fees paid or purchases must be for the exact amount. Checks may be made payable to Lincoln Middle School. Please do not send checks or money for amounts over the fees owed. All fines and fees must be paid before student records can be issued. Payment for each fee must be made separately, and checks must be written for the exact amount. Checks written for the incorrect amount will be returned.

PHYSICAL EXAMS

All students participating in athletics are required to have a current physical exam from a practicing physician. Physicals are good for two years. This includes students who are new to the district and also students who are entering sixth grade. The exam form needs to be on file at the school before the student actively participates in any athletic program. Forms are available in the main office and some physicians' offices. Exams used for summer camp will satisfy this request.

STUDENT TELEPHONE

A phone for student use is located in the lobby outside the office. All calls made by students should occur at a time other than class time. The telephones are to be used for local calls only. **Students that are caught making prank phone calls will receive an in-school suspension and may be subject to prosecution according to local or state law and /or federal communications law.**

STUDENT RECOGNITION

STUDENT OF THE MONTH:

The LMS Student of the Month program is sponsored by the Pullman Kiwanis Club. Each month one student is selected from each homeroom. Then a grade-level Student of the Month is selected by teachers and classmates. The grade-level Student of the Month is honored by the Pullman Kiwanis at a luncheon with their parents. At the luncheon, they will receive a \$50 check, half of which must be given to a charity or benefit of their choice. Criteria for the nominations and selection include good citizenship at school and in the community, regular school attendance, steady academic progress, cheerful attitude, and a person who represents Lincoln Middle School well in the community.

8th GRADE PROMOTION:

The 8th grade class each year will be celebrated during the last weeks of school. The exact date will be announced ahead of time, via email, newsletter, and daily announcements. All 8th grade students will receive a certificate of promotion, and have the opportunity to attend a procession at which friends and family are welcome to attend.

TEXTBOOKS & SCHOOL DEVICES

Students will be loaned the textbooks needed for each class. The condition and number of each book will be noted when it is issued. Students are to cover each textbook. Students will be assigned a Chromebook and charger to use during the school year. The condition and number of the device will be noted when it is issued. A protection plan is available for incidents of unintentional damage to the device, excluding certain conditions and terms (see Chromebook Protection Plan form). Students are responsible for treating the device so as to keep it in working order, as well as for its whereabouts. If a textbook/device is lost or damaged, the student is responsible to pay for its replacement or repair. A fine will be placed on the student's account in our InTouch program and will need to be paid, or item returned, before the student can participate in any sports or extracurricular programs. All lost or misplaced textbooks/devices need to be reported as soon as possible.

VALUABLES

Students should bring to school only those items needed for their classes and activities. Students are discouraged from bringing large amounts of money or valuables because the school cannot be responsible for lost or stolen items.

VISITORS

Parent/Guardian visitors are welcome at Lincoln Middle School. We do require that all visitors report to the office upon arrival. Visitors are to sign in on the Visitors computer kiosk and obtain a Visitor's badge. Photo identification may be requested of visitors. Students from other schools, however, are not permitted to visit unless they have permission from the principal.

Students who are hosting guests must:

1. Obtain a visitor's form
2. Seek permission from parent
3. Acquire the signatures of all teachers

4. The hosting student must go over all rules and regulations of the school. If a guest should violate any policy, the guest will be removed from the grounds and will not be granted permission to return to LMS for the rest of the year. If a hosting student should violate LMS visitation policy, he or she will be denied visitation privileges.
5. Submit the form to an administrator. THIS FORM MUST BE OBTAINED AT LEAST ONE DAY IN ADVANCE. NO VISITORS WILL BE ALLOWED DURING THE LAST WEEK OF SCHOOL. Visiting students must be middle school age and must be in the same grade as the hosting student. A visiting student must attend classes scheduled for the student with whom they are visiting. Visiting students will be given a visitor's permit at the office. The permit must be shown to each teacher whose class is visited. Teachers or administrators have a right to revoke the permit at their discretion. Visitation of other students is restricted to one day. **Guests are not included in LMS dances and after school activities that are planned and funded exclusively for LMS students.**

STUDENT ACTIVITIES

All LMS students have the opportunity to participate in a variety of co-curricular activities. The activities include athletics, academic competition, interest groups, student government, social events, and fund raisers. The philosophy behind the LMS activity program is to encourage participation of all interested students. **Each LMS student must purchase a photo-identification Associated Student Body (ASB) card that will ensure the opportunity to participate in events planned for LMS students. ASB cards are \$30 for all students.**

TEAMS AND CLUBS AT LINCOLN MIDDLE SCHOOL

ATHLETICS (6th)

Girls' Volleyball, <i>intramural</i>	1 st quarter
Boys' & Girls' Cross Country	1 st quarter
Girls' Bowling, <i>intramural</i>	2 nd quarter
Boys' Basketball, <i>intramural</i>	2 nd quarter
Girls' Basketball, <i>intramural</i>	3 rd quarter
Wrestling	3 rd quarter
Track & Field	4 th quarter

INTERSCHOLASTIC ATHLETICS (7th & 8th)

Football	1 st quarter
Cross Country	1 st quarter
Girls' Volleyball	1 st quarter
Girls' Bowling	2 nd quarter
Boys' Basketball	2 nd quarter
Girls' Basketball	3 rd quarter
Wrestling	3 rd quarter
Boys' & Girls' Track	4 th quarter

ARTISTIC AND PERFORMANCE GROUPS

Art Club
Drama Club
Jazz Band (6th)
Jazz Band (7th & 8th)
Jazz Choir

ACADEMIC COMPETITION

Math Team
Science Bowl
Science Olympiad

ALTRUISTIC AND SPECIAL INTEREST CLUBS

Art Club
Chess Club
Cryptid Club
Cubing Club
E-Sports Club
GSA Club
Magic: The Gathering Club
Spartan Minds Matter Club
Spartan Sprouts Club
Students of Color Alliance (SOCA) Club Student Council
Washington Tech Student Association
Yearbook Club

New clubs can be added throughout the school year depending on interest.

EXTRACURRICULAR ACTIVITIES

The extracurricular activity program at Lincoln Middle School is completely voluntary. Involvement in the activities program requires extra effort and time on a voluntary basis beyond the regular school day. Those who choose to participate represent their student body and community in local, regional, and national competitions and events. The highest standards of citizenship, sportsmanship, personal conduct, and loyalty must be maintained. The total school program is reflected in the extracurricular activities program. **Those students who earn disciplinary sanctions will follow the process listed below:**

- **1st detention:** Head coach's decision on participation in next scheduled event.
- **2nd detention/1st suspension:** Automatic removal from the next scheduled event. A student may be removed from the activity for the season if the infraction is severe.
- **3rd detention/2nd suspension:** Student may be removed from the activity for the season.

In all activities, all who choose to participate will have a place on a team. Whatever a student's interest level or

abilities may be for a particular type of activity, there is a club, team or group to match. We believe there is a positive correlation between a student's performance and the student's adherence to practice and training schedules. The goal statement for Lincoln Middle School's activity program is: *"It shall be the goal for Lincoln Middle School activity programs to provide sportspersonship, cooperation, leadership, recognition, and affiliation in all activities offered for each LMS student."*

GUIDELINES FOR STUDENT ACTIVITIES

Section I: Rules and Regulations: The following rules and regulations apply to all students participating in Lincoln Middle School extracurricular activities, and conform to the rules for each activity as defined by the Washington Interscholastic Activities Association.

1. Each student participant is expected to adhere to the Pullman School District Students' Rights and Responsibilities Policy #3200, in all matters of individual conduct while representing Lincoln Middle School.
2. Each student participant is expected to follow the advice and directions of the activity coach, director, or sponsor in matters of performance while representing Lincoln Middle School.
3. Each student participant is expected to be a good citizen in school, in the community, and in all contests and activities. Specific activity related consequences occur when detention and in-school suspensions are assigned. **Students may not continue participation in ANY extracurricular activity while a sanction is being served or pending.**
4. Each student participant shall be in attendance at school for the entire school day on the day of an after-school activity. Each student shall also be in attendance at school on the entire day to be eligible to participate in after-school practice or rehearsal on the given day. The only exception is a signed excuse from the principal or vice principal which is presented to the coach, director, advisor, or sponsor.
5. Each student participant representing Lincoln Middle School is expected to exemplify the highest of standards of good sportsmanship. Sportspersonship consists of these qualities: courteousness, fairness, and respectfulness to officials, teammates, opponents, coaches, and all other associated with the activity.

Section II: Procedures for Violation: A student participant who does not abide by the above rules and regulations shall be placed on probation, suspended, or dismissed from a team, club or group. Any disciplinary decisions, resulting from any violation, shall be subject to the hearing and appeal procedure outline in the LMS Agenda, and the Pullman School District Board of Directors' Policy #3200.

Section III: Student Activity Eligibility:

1. LMS Athletes are only allowed 1 F reported for each grading period to remain eligible for athletics and activities. If an LMS student has more than 1 F, they are ineligible for competitions until their grades improve to having 1 or less F's.
Ineligible students are expected to practice, BUT CANNOT travel, play, compete, or perform with the team/activity. All students are expected to participate in practice during the period grade checks if they wish to resume as a full member of the squad when they become grade eligible.
2. Incomplete grades may be made up for credit during the first five weeks of the subsequent semester. The student shall be ineligible for school activity groups until the incomplete grades are cleared.

3. In the event a student was not absent from school, yet missed practice or an event, a written excuse signed by the parent or guardian must be given to the coach, director, advisor, or sponsor. If a student participant has several excused absences, he/she will be provided limited performance time from those students who have regular attendance. If a note is not given to the coach, director, advisor, or sponsor, the absence will be considered unexcused. **A student who has two unexcused absences during an activity season may be dismissed from the team, club, or group.**
4. Each student who participates in athletics must have on file a current physical examination. The statement from the examining physician certifies that the student's physical condition for the activity in which he/she is participating. Each student must also have a WIAA Insurance Waiver Form and PSD Emergency Contact Form on file prior to participation.

Section IV: Equipment and Facilities: School equipment checked out by the student becomes the responsibility of the student during the time of the loan. Students are expected to keep and return all equipment clean and in good condition. Lost or damaged equipment or uniforms will be the student's financial obligation. Fines will be assessed in our InTouch program for unreturned or damaged items.

1. Students are prohibited from using school issued equipment while participating in any event outside the school activity program.
2. Misuse or abuse of dressing room facilities, lockers, benches, gym, classroom, or field facilities will not be permitted. Violations of the trust put in students using the school facilities and equipment during the course of their activities may result in the student's dismissal from the team, club, or group.

Section V: Travel for Lincoln:

1. Many student groups from LMS travel to and from contests with their teams, clubs, and groups. School district vehicles are provided for this purpose. Student participants are expected to ride with their team, club, or groups while traveling for LMS. Only in the case of personal contact between the coach, director, advisor, or sponsor and the student's parent can exceptions be made. If possible, permission for a student to ride with their parent should be obtained one day in advance. Students are not allowed to ride with anyone other than parent or guardian without express written consent of a school administrator.
2. Each student participant is expected to obey all school bus regulations (see Student Agenda pages 11-13).
3. Each student participant will be conscious of what constitutes appropriate dress for home and away contests and events. See [LMS Dress Code](#) on page 13 of this addendum.

Section VI: Amateur Standing: An amateur student athlete is one who engages in athletics for the physical, mental, social, and educational benefits and for whom athletics is an avocation not a source of financial reward. In order to maintain his/her amateur standing, they may not:

1. Accept merchandise of more than \$100 in value.
2. Accept cash awards.
3. Enter competition under a false name.
4. Accept payment of excessive expense allowances.

WASHINGTON INTERSCHOLASTIC ASSOCIATION (WIAA) CODE OF ETHICS

It is the duty of all concerned with school athletics:

1. To emphasize the proper ideals of sportsmanship, ethical, conduct and fair play.
2. To eliminate all possibilities which tend to destroy the best values of the game.
3. To stress the values derived from playing the game fairly.
4. To show cordial courtesy to visiting teams and officials.
5. To establish a happy relationship between visitors and hosts.
6. To respect the integrity and judgment of sports officials.
7. To achieve a thorough understanding and acceptance of the rules of the game and the standards of eligibility.
8. To encourage leadership, use of initiative, and good judgment by the players on the team.
9. To recognize that the purpose of athletics is to promote the physical, mental, moral, social, and emotional well-being of the individual players.
10. To remember that an athletic contest is only a game—not a matter of life or death for players, coaches, schools, officials, fans, community, state, or nation.

ACTIVITY CARDS:

Students may receive a unique holepunch in their photo ID for a fee of \$30 for sixth, seventh and eighth graders to indicate ASB membership. Financial waivers are available for families who qualify for Free or Reduced meal assistance. This one-time fee will provide students admittance to all home LMS athletic events, LMS dances (discounted admittance), and other school activities, as well as membership on LMS teams and clubs. **When students attend any LMS function, they must show their ASB cards.** Activity cards will be on sale at any time during the school year. Replacement of lost cards will be \$5.

FUNDRAISER

In order to carry on a full extracurricular activity program, it is necessary for the students to help with expenses for these activities. At LMS we will host an annual fundraiser to raise funds for our student activities. This plan has been efficient and profitable. Information in regards to the fundraiser will be sent out to students prior to the start of the fundraiser.

DISCIPLINARY PROCEDURES

SANCTIONS DEFINED

Discipline is earned by making an inappropriate choice. All forms of corrective action will be administered to each student individually to best provide for the student's effective learning opportunities.

Please refer to Board Policy 3241 Student Discipline and accompanying procedures and forms outlining disciplinary procedures for Pullman School District.

[3241 Student Discipline](#)

[3241P Student Discipline](#)

[3241F1 District Discipline Matrix](#)

[3241F2 District Continuum of Discipline Responses](#)

Board Policy 3241 Student Discipline can also be found in **Appendix B** of the Pullman School District Family handbook.

LINCOLN MIDDLE SCHOOL ACADEMIC PROGRAM

Middle school is a transitional program leading from the self-contained elementary classroom setting to the more departmentalized high school model. The table below identifies the classes most students might expect depending upon their grade level.

	6th Grade	7th Grade	8th Grade
1	English/Literature	English/Literature	English/Literature
2	Mathematics	Mathematics	Mathematics
3	Science	Life Science	Earth Science
4	Social Studies	World History/ Washington State History	US History (1 term) Computer Applications (1 term)
5	Music Elective	Elective Choice (term or yearlong)	Elective Choice (term or yearlong)
6	Fitness, Movement, Sport & Health (3 terms) Art Fundamentals (1 term)	Fitness, Movement, Sport & Health	Fitness, Movement, Sport & Health

GRADE 6 REQUIRED COURSE DESCRIPTIONS School Year: 2025-2026

ENGLISH/LITERATURE: This English Language Arts course teaches reading and writing standards through the lens of literature and informational structures. Throughout the course of the year, students will focus on comprehension and critical thinking in relation to a variety of different text structures. Students will also develop and establish writing skills while creating argumentative, expository, and narrative projects.

MATHEMATICS OPTIONS:

- **MATH 6:** This course teaches in-depth the 6th grade mathematical standards that are aligned with the Common Core Standards. Instructional time will be focused on four critical areas: (1) connecting ratio and rate to whole number multiplication and division and using concepts of ratio and rate to solve problems; (2) completing understanding of division of fractions and extending the notion of number to the system of rational numbers, which includes negative numbers; (3) writing, interpreting, and using expressions and equations; and (4) developing an understanding of statistical thinking.
- **MATH 6/7:** This class is offered to qualifying 6th grade students using assessment data collected in 5th grade along with teacher input. This course teaches all 6th grade and some 7th grade math standards that are aligned with the Common Core Standards. The instructional time for this class will focus on the four critical areas described for Math 6 (above) and the following from Math 7: (1) analyzing and representing proportional relationships and (2) performing rational number arithmetic. Solving multi-step equations and working with probability will also be introduced in this class.

SOCIAL STUDIES: This course is designed to lay the foundations for understanding the development of societies and civilizations from early human social groupings to more advanced societies and the rise of first empires. As such, students will be exposed to, and become familiar with, different people, places, and cultures from around the world. Early civilizations, cultures and geography are studied from Meso-America to pre-Mesopotamia, ancient Egypt, Greece, and Rome.

SCIENCE: Sixth Grade Science covers physical science topics including light & matter and thermal energy. Earth science topics include weather systems, plate tectonics & rock cycling, and natural hazards. Life science topics include cells & cell systems. We take a phenomenon-based approach to discovering more about each topic and practice “being a scientist” by utilizing scientific practices throughout the year. These are all aligned with Next Generation Science Standards as adopted by Washington State.

CHOIR: Sixth grade choir is open to all students regardless of experience or ability. Time in class is primarily spent exploring vocal technique through song while practicing beginning part-singing and advancing in rhythm and note reading. Students sing music of varying styles from a variety of cultures. Goal setting and home practice are required as students prepare for performances, including a choral festival. Students are expected to participate in evening performances periodically throughout the year, which are counted as a percentage of their grades. ****STUDENTS WHO OPT TO JOIN THE JAZZ CHOIR, WHICH MEETS BEFORE SCHOOL, ARE REQUIRED TO ENROLL IN THIS CLASS.**

GRADE 6 BEGINNING BAND: Beginning band is open to all sixth-grade students and is designed for students who want to learn how to play an instrument that is a part of the modern wind band ensemble (see list below). The majority of the time spent in the sixth-grade band is dedicated to learning how to play a

musical instrument with an emphasis on technique, music theory, and music history. This ensemble will perform at least two concerts throughout the school year. Previous knowledge of music is not required. Band instruments from which to choose: Flute, Oboe, Bassoon, Clarinet, Bass Clarinet, Alto Saxophone, Tenor Saxophone, Baritone Saxophone, Trumpet (or Cornet), French Horn, Trombone, Baritone (or Euphonium), Tuba, Bells, (bell kit required) (limit 8). Priority for school instruments will be given to those who otherwise could not afford to rent an instrument through music stores. School rentals are offered on a first-come, first-served basis for \$75 per semester.

ORCHESTRA: Sixth-grade orchestra builds on the skills learned in elementary school. More advanced music and vibrato skills are introduced. This class is not designed for beginning strings students. Home practice will be required as a portion of their grade. Students who are currently enrolled in the elementary strings program are encouraged to continue in the orchestra. A limited number of instruments are available through the school. School rental fees per semester are \$50 for violins, violas, and cellos. Music stores also have rentals for a slightly higher rate.

FITNESS, MOVEMENT, SPORT & HEALTH (FMSH) - *Three quarters taught in conjunction with Art:*

FMSH is taught in conjunction with Art. Three quarters of the year will be spent in FMSH and a single quarter in Art. The purpose of Fitness, Movement, Sport and Health at Lincoln Middle School is to create a safe environment for students to take positive risks, experience a variety of activities that promote healthy and fit lifestyles, and understand the benefit of purposeful movement. Students will also learn accurate health information that encourages positive life choices and influences, and demonstrate growth in their knowledge, understanding, and application of the Washington State Physical Education and Health Education Standards and important concepts.

ART FUNDAMENTALS - *One quarter taught in conjunction with Fitness, Movement, Sport & Health:*

Art is taught in conjunction with FMSH. One quarter of the year will be spent on Art. In this course, students will be introduced to a variety of mediums and techniques to learn about the elements and principles of art. Students will also be exposed to art development across cultures and history, and explore how these contexts relate to their own work. Students will work in both 2D and 3D media, with an emphasis on exploration, creativity, and understanding of basic concepts. Drawing, painting, ceramics, and papier-mâché will be among the media explored throughout the quarter.

GRADE 7 REQUIRED COURSE DESCRIPTIONS School Year: 2025-2026

MATH OPTIONS:

MATH 7: This course teaches in-depth the 7th grade mathematical standards that are aligned with the Common Core Standards. Instructional time will be focused on four critical areas: (1) developing an understanding of and applying proportional relationships; (2) developing an understanding of operations with rational numbers and working with expressions and linear equations; (3) solving problems involving scale drawings and informal geometric constructions and working with two- and three-dimensional shapes to solve problems involving area, surface area, and volume; and (4) drawing inferences about populations based on samples.

MATH 7/8: This class is offered to qualifying grade 7 math students who have successfully completed math 6/7 in 6th grade. The instructional time during this class will focus on 8th grade math standards. Additionally, we will complete coverage of the 7th grade math standards (those not covered in Math 6/7). See descriptions regarding Math 7 and Math 8 in the course descriptions.

ENGLISH / LITERATURE BLOCK CLASS: This class is designed to provide students with an integrated approach to learning language arts and literature. This program will emphasize effective communication through reading, writing, speaking, and listening as the students better understand themselves and others. Organization, study, and keyboarding skills will be reinforced throughout the year. In addition to the literature anthology, the students will read *The Outsiders* and the graphic novel *March* as special literary units.

SOCIAL STUDIES: This course will cover world societies from 476 CE to 1450 CE. Societies covered will include European, Middle Eastern, and African kingdoms. Additionally, this course includes exposure to Washington State History (WSH). Successful completion of WSH will comply with the Washington State High School Graduation Milestone requirement.

SCIENCE: Seventh-grade science is a year-long, lab-based course covering the three branches of science: Physical, Life and Earth & Space. Physical Science involves chemistry and how atoms are the building blocks of everything on Earth. Life Science explores microscopic cells and macroscopic ecosystems. Earth Science investigates how humans affect those ecosystems. While learning the science behind those topics, we strengthen our Science and Engineering Practices (SEPs) including making observations, interpreting data and asking questions. These are aligned with Next Generation Science Standards as adopted by Washington State.

FITNESS, MOVEMENT, SPORT & HEALTH (FMSH): The purpose of Fitness, Movement, Sport and Health at Lincoln Middle School is to create a safe environment for students to take positive risks, demonstrate their knowledge in a variety of activities that promote healthy and fit lifestyles, and to understand the benefit of purposeful movement. Students will also learn accurate health information

that encourages positive life choices and influences, and demonstrate growth in their knowledge, understanding, and application of the Washington State Physical Education and Health Education Standards and important concepts.

GRADE 7 ELECTIVE COURSE DESCRIPTIONS School Year: 2025-2026 SEMESTER-LONG COURSES

LEADERSHIP: This class focuses on leadership attributes that can be identified, modeled, and taught. The class is primarily experiential-learning-based and emphasizes the importance of communication, character, personal growth, and building strong relationships and teams. Students will plan assemblies, fundraisers, and other school activities based on their interests. Class participants must be able to work independently in a manner that appropriately represents Spartan student leaders.

MIXED MEDIA ART: (1st semester only) This course is designed for hands-on learners who like to explore and create. This semester, we will continue to learn about the Art Elements and build our knowledge of the Principles of Design and Composition. Students will work with a variety of materials such as wood, fabric, recycled materials, collage, and more. Topics may include public art, music and visual art, environmental issues, social issues, and more. Students will develop works that help them explore their world and their creative expression.

DRAWING & PAINTING: (2nd semester only) This course is designed for students who like to explore and create while learning drawing and painting techniques. Students will continue to learn about the Art Elements and build knowledge of the Principles of Design and Composition. Students will work with a variety of drawing, watercolors, and acrylic paint mediums. Topics will include basic color theory, color mixing composition, and visual communication.

COMPUTER SCIENCE FOR INNOVATORS & MAKERS: (1st semester only) Students are challenged to creatively use sensors and actuators to develop systems that interact with their environment. Designing algorithms and using computational thinking practices, students will code and upload programs to microcontrollers that perform a variety of authentic tasks. This course will broaden students' understanding of computer science concepts through meaningful applications. Students will work in teams and work through a simulation related problem involving wearable technology, interactive art, or a mechanical device. **Pathway to HS courses in Digital Electronics and Computer Science*

DESIGN AND MODELING: (2nd semester only) Students will be provided opportunities to apply the design process to creatively solve problems. Students learn to use methods for communicating design ideas through sketches, solid models, and mathematical models. Students will understand how models can be simulated to represent an authentic situation and generate data for further analysis and observation. In a simulation, teams will design a toy or game for a child with cerebral palsy, fabricate and test the design, and make necessary modifications to optimize the design. Students will design bridges, and model using 3D software, and print designs using 3D printers. **Pathway to Woodshop, Drafting, Metals*

AUTOMATION & ROBOTICS: Students will develop skills within automation and robotics to improve daily life. Students investigate mechanical systems, motion, transfer, machine automation, and computer control systems. Students will learn about gear ratios and block-based coding to create robotic machines. Using the VEX® Robotics platform, students design, build, and program real-world devices, such as a food dispenser, a robot pet companion, and a transport system. **Pathway to robotics club (SEL)*

DIGITAL DESIGN: This Course will integrate Art, Computer Science, and Technology Skills. Students will learn the 8 elements of design, 12 principles of design, basics of industrial and graphic design, and fashion art. Students will use software including Adobe Express, Pixlr, and Canva to create business logos, fashions design, and presentation boards. **Pathway to Fashion and Digital design, Digital Media, Art.*

YEAR-LONG COURSES

CONCERT CHOIR 7/8: Concert choir offers students choral advancement in vocal production, rhythmic style, and ensemble performance skills. For skill advancement, first year Concert Choir students are assessed on concepts that extend from 6th grade choir; second year Concert Choir students are assessed on concepts that extend from their first year. Second year students leave well-prepared to move on to the high school level. A wide selection of choral music is used throughout the year, some of which involves student input. Performances include evening concerts, festivals, and school assemblies. ****STUDENTS WHO OPT TO JOIN JAZZ CHOIR, WHICH MEETS BEFORE SCHOOL, ARE REQUIRED TO ENROLL IN THIS CLASS.**

ORCHESTRA 7: This class is for continuing string players, and performance is the primary emphasis of the course. Rhythm, music reading and coordination, ensemble, a range of new keys, and responsible group membership are emphasized. Performances include fall, winter, and spring concerts as well as in-school assemblies and music festivals/trips. Participation in the “Disney & Desserts” fundraiser in the fall is also encouraged.

BAND 7: This class continues the goals and objectives of the sixth-grade band. Students will learn advanced concepts regarding tone production, rhythm, intonation, musical styles, and technical aspects of the instruments. This class is for continuing band students (no beginners), and performance is the primary emphasis of the course. Performances include fall, winter, and spring concerts as well as in-school assemblies and music festivals/trips/parades.

GRADE 8 COURSE DESCRIPTIONS

School Year: 2025-2026

MATH OPTIONS:

MATH 8: This course teaches in-depth the 8th grade mathematical standards that are aligned with the Common Core Standards. Instructional time will be focused on three critical areas: (1) formulating and reasoning about expressions and equations, and solving linear equations and systems of linear equations; (2) grasping the concept of a function and using functions to describe quantitative relationships; (3) analyzing two- and three-dimensional space and figures using distance, angle, similarity, and congruence, and understanding and applying the Pythagorean Theorem.

ALGEBRA I: This **high school credited** course focuses on algebraic problem-solving. The course will address: (1) formulating, reasoning and solving linear, exponential and quadratic expressions and equations; (2) deriving and modeling with linear, exponential and quadratic functions; (3) formulating and analyzing statistical questions, including questions resulting in one and two-variable data. *The grade in this class will automatically be included on the high school transcript.*

ENGLISH / LITERATURE BLOCK CLASS: This class focuses on a variety of reading, writing, language, and speaking and listening skills. Students will be building reading and writing stamina. In reading, students will be reading to identify narrative/elaboration/rhetorical strategies in writing and other passages (fiction and non-fiction). Reading comprehension includes inferring and analyzing text in short responses, including creating a claim, citing evidence, explaining evidence, and using transitions. Novel reading includes discussions in the form of Socratic Seminars and extended activities which aid in reviewing and mastering reading skills. In writing, students will be learning the writing process (brainstorming, narrowing a topic, organizing an essay, writing with elaboration/rhetorical strategies, writing effective introductions and conclusions).

SOCIAL STUDIES: In this semester-long course, students will explore American history, civics and government from the early colonial period through the Civil War and Reconstruction, examining key events, figures, and movements that shaped the nation.

SCIENCE: Eighth-grade science is a year-long lab-based course, where students will explore three science topics: Physical Science, Life Science, and Space Science. In Physical Science, we will explore forces such as Contact Forces, Sound Waves, and Forces at a Distance. In Life Science, we will explore Genetics, Natural Selection, and Adaptations. In Space Science, we will explore how Earth fits in the Solar System, Seasons, and Moon Phases. These are all aligned with Next Generation Science Standards as adopted by Washington State.

FITNESS, MOVEMENT, SPORT & HEALTH (FMSH): The purpose of Fitness, Movement, Sport and Health at Lincoln Middle School is to create a safe environment for students to take positive risks, demonstrate their knowledge in a variety of activities that promote healthy and fit lifestyles, understand the benefit of purposeful movement, learn accurate health information that encourages positive life choices and influences, and demonstrate growth in their knowledge, understanding, and application of the Washington State Physical Education and Health Education Standards and important concepts.

COMPUTER APPLICATIONS: This class is designed to introduce students to workplace technology. This course explores educational plan development, career exploration, and communication skills by using technology in a business setting. Using Microsoft Office 2019, students will learn introductory word processing, spreadsheets, presentations, and graphic applications. Students are also expected to master basic keyboarding skills. The class will also give students the opportunity to explore post-high school education and employment options by completing the Washington State required High School & Beyond Plan.

GRADE 8 ELECTIVE COURSE DESCRIPTIONS School Year: 2025-2026

SEMESTER-LONG COURSES

LEADERSHIP: This class focuses on leadership attributes that can be identified, modeled, and taught. The class is primarily experiential-learning-based and emphasizes the importance of communication, character, personal growth, and building strong relationships and teams. Students will plan assemblies, fundraisers, and other school activities based on their interests. Class participants must be able to work independently in a manner that appropriately represents Spartan student leaders.

COMMUNICATIONS/MEDIA: This class produces the Channel 3 News Program. Learned skills will include video editing, scriptwriting, anchoring, technical work, graphics, and videography. Students will gain valuable technical and leadership experience in broadcast journalism.

MIXED MEDIA ART: (1st semester only) This course is designed for hands-on learners who like to explore and create. Students will continue to learn about the Art Elements and build their knowledge of the Principles of Design and Composition. Students will work with a variety of materials such as wood, fabric, recycled materials, collage, and more. Topics may include public art, music and visual art, environmental issues, social issues, and more. Students will develop works that help them explore their world and their creative expression.

DRAWING & PAINTING: (2nd semester only) This course is designed for learners who like to explore and create while learning drawing and painting techniques. Students will continue to learn about the Art Elements and build their knowledge of the Principles of Design and Composition. Students will work with a variety of drawings, watercolors, and acrylic paints. Topics will include basic color theory, color mixing composition, and visual communication.

COMPUTER SCIENCE FOR INNOVATORS & MAKERS: (1st semester only) Students are challenged to creatively use sensors and actuators to develop systems that interact with their environment. Designing algorithms and using computational thinking practices, students will code and upload programs to microcontrollers that perform a variety of authentic tasks. This course will broaden students' understanding of computer science concepts through meaningful applications. Students will work in teams and work through a simulation related problem involving wearable technology, interactive art, or a mechanical device. **Pathway to HS courses in Digital Electronics and Computer Science*

DESIGN AND MODELING: (1st semester only) Students will be provided opportunities to apply the design process to creatively solve problems. Students learn to use methods for communicating design ideas through sketches, solid models, and mathematical models. Students will understand how models can be simulated to represent an authentic situation and generate data for further analysis and observation. In a simulation, teams will design a toy or game for a child with cerebral palsy, fabricate and test the design, and make necessary modifications to optimize the design. Students will design bridges, and model using 3D software, and print designs using 3D printers. **Pathway to Woodshop, Drafting, Metals*

AUTOMATION & ROBOTICS: Students will develop skills within automation and robotics to improve daily life. Students investigate mechanical systems, motion, transfer, machine automation, and computer control systems. Students will learn about gear ratios and block-based coding to create robotic machines. Using the VEX® Robotics platform, students design, build, and program real-world devices, such as a food dispenser, a robot pet companion, and a transport system. **Pathway to robotics club (SEL)*

MEDICAL DETECTIVES: (1st semester only) Students will play the role of real-life medical detectives as they collect and analyze medical data to diagnose disease. They solve medical mysteries through hands-on projects and labs, measure and interpret vital signs, dissect sheep brains, investigate disease outbreaks, and explore how a breakdown within the human body can lead to dysfunction. Students will also explore a unit on forensic science performing hands-on analysis, utilizing field-based tools to solve a simulated mystery case. **Pathway to Biology, Veterinary Science, Health Sciences*

DIGITAL DESIGN: (2nd semester only)

This course will integrate Art, Computer Science, and Technology Skills. Students will learn the 8 elements of design, 12 principles of design, basics of industrial and graphic design, and fashion art. Students will use software including Adobe Express, Pixlr, and Canva to create business logos, fashions design, and presentation boards. **Pathway to Fashion and Digital design, Digital Media, Art.*

TEACHER'S AIDE, OFFICE AIDE, or LIBRARY AIDE A limited number of aide positions are available with classroom or office staff. Teacher's Aides or Office Aides are expected to assist staff in a responsible and independent manner. Specific duties vary depending on the staff assignment. Library Aides must be comfortable with alphabetizing and shelving books. *Students must have excellent attendance in order to be considered for a TA position.*

YEAR-LONG COURSES

SPANISH I: This is a class for **high school credit**. It is designed for students interested in learning to understand, speak, read, and write the Spanish language. Emphasis is on building vocabulary and introducing the basic language structure necessary to communicate in practical situations. **Students taking Zero Hour classes forego all before school activities, sports and clubs*

FRENCH I: This class is for **high school credit**. It is an introductory course for students interested in learning to understand, speak, read, and write the French language. Emphasis is on building vocabulary and introducing the basic language structures necessary to communicate in practical situations.

CONCERT CHOIR 7/8: Concert choir offers students choral advancement in vocal production, rhythmic style, and ensemble performance skills. For skill advancement, first year Concert Choir students are assessed on concepts that extend from 6th grade choir; second year Concert Choir students are assessed on concepts that extend from their first year. Second year students leave well-prepared to move on to the high school level. A wide selection of choral music is used throughout the year, some of which involves student input. Performances include evening concerts, festivals, and school assemblies. ****STUDENTS WHO OPT TO JOIN JAZZ CHOIR, WHICH MEETS BEFORE SCHOOL, ARE REQUIRED TO ENROLL IN THIS CLASS.**

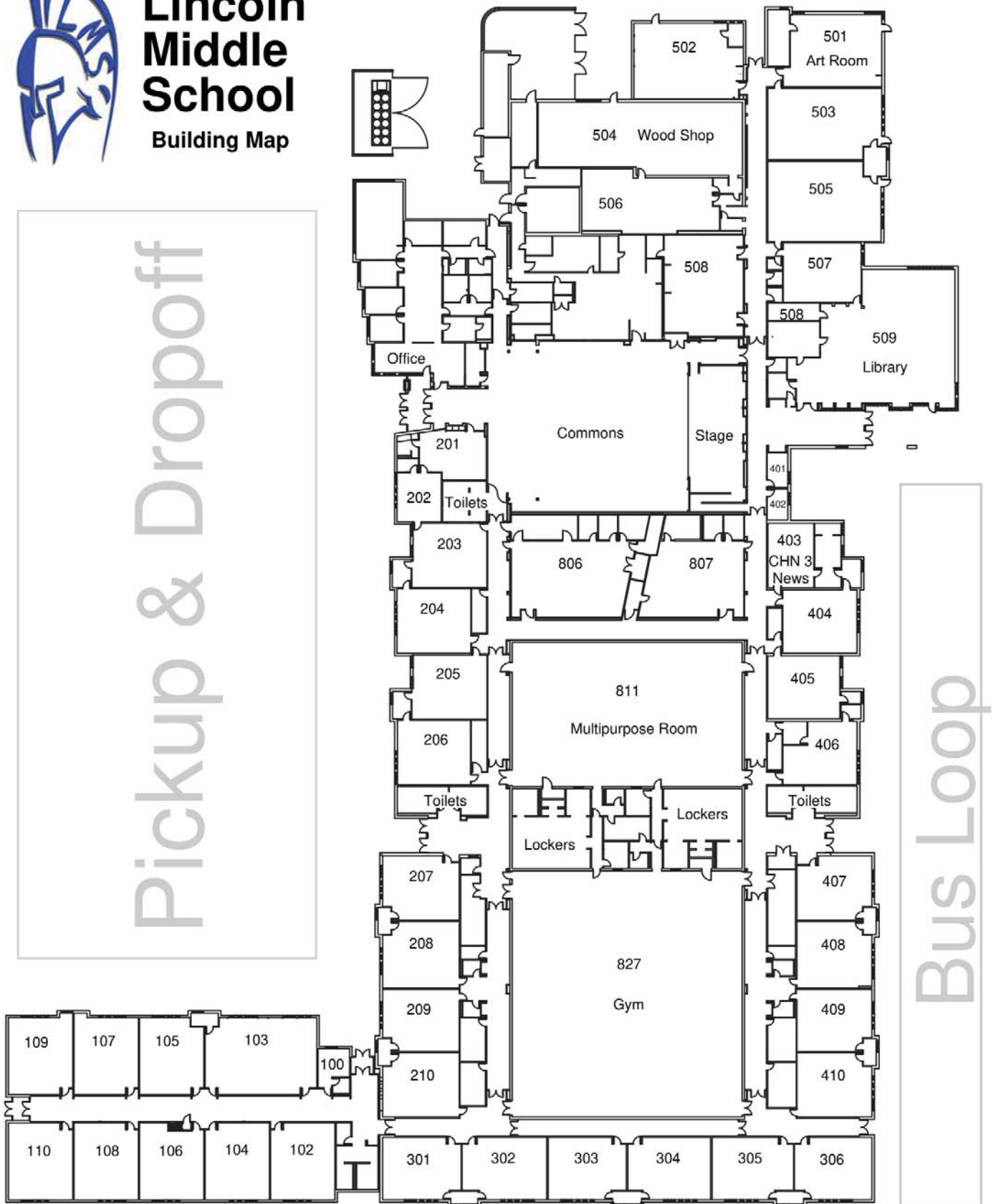
ORCHESTRA 7/8: This class is for continuing string players is the primary emphasis of this course. Rhythm, music reading and coordination, ensemble, a range of new keys, and responsible group membership are emphasized. Performances include fall, winter, and spring concerts as well as in-school assemblies and music festivals/trips. Participation in the "Disney & Desserts" fundraiser in the fall is also encouraged.

BAND 8: This class continues the goals and objectives of the seventh-grade band. Students will learn advanced concepts regarding tone production, rhythm, intonation, musical styles, and technical aspects of the instruments. This class is for continuing band students (no beginners), and performance is the primary emphasis of the course. Performances include fall, winter, and spring concerts as well as in-school assemblies and music festivals/trips/parades.

LINCOLN MIDDLE SCHOOL BUILDING MAP



Lincoln Middle School Building Map



LINCOLN MIDDLE SCHOOL EVACUATION PLAN

Office, Kitchen, Commons, Rooms 201, 202, 203

Exit door 1 (by main office).
Follow sidewalk to North end of front parking lot.
Report to soccer field.

Rooms 204, 205, 206, 207, 208, 806

Exit door 2 (by room 207).
Follow sidewalk between parking lot and tennis courts to North end of front parking lot.
Report to soccer field.

Rooms 102, 103, 104, 209, 210, 301, 302

Exit door 3 (by room 301) at the Southwest corner of the building.
Follow sidewalk between parking lot and tennis courts to North end of front parking lot.
Report to soccer field.

Rooms 105, 106, 107, 108, 109, 110

Exit door 4 (by room 109) at the southwest corner of the building.
Follow sidewalk parallel to soccer field to North end of front parking lot.
Report to soccer field.

Rooms 303, 304, 305, 306, 410

Exit door 5 (by room 306) at southeast side of the building.
Move to football/track area.
Report to the track on the West side of the football field, near the goal line.

Rooms 827 (Gym), 811 (Multipurpose Room), 405, 406, 407, 408, 409

Exit door 6 (by room 407) on the east side of the building.
Move to football/track area.
Report to the football field between the goal line and the 50-yard line.

Rooms 401, 402, 403, 404, 807

Exit door 7, next to library.
Move to football/track area.
Report to the track on the East side of the football field, beyond the goal line

Rooms 500, 503, 505

Exit using classroom outer doors.
Move Southward along East side of building and up the sidewalk along bus lane.
Report to top of hill on the sidewalk.

Rooms 501, 504, 506, 508

Exit door 8 (by room 501), North side of the building.
Move to the North end of the front parking lot using sidewalk.
Report to soccer field.

Rooms 507, 508, 509 (Library)

Exit through library South emergency door.
Move to sidewalk on Northwest side of bus entry.
Report to top of hill on the sidewalk.

**Subject to change.*



LINCOLN MIDDLE SCHOOL

BELL SCHEDULE

MONDAY	TUESDAY	WEDNESDAY	THURSDAY	FRIDAY
1ST PERIOD 9:00-9:45	1ST PERIOD 8:30-9:25	1ST PERIOD 8:30-9:25	1ST PERIOD 8:30-9:25	1ST PERIOD 8:30-9:25
2ND PERIOD 9:50-10:34	2ND PERIOD 9:30-10:25	2ND PERIOD 9:30-10:25	2ND PERIOD 9:30-10:25	2ND PERIOD 9:30-10:25
SEL TIME 10:39-11:09				
3RD PERIOD 11:14-11:58	3RD PERIOD 10:30-11:25	3RD PERIOD 10:30-11:25	3RD PERIOD 10:30-11:25	3RD PERIOD 10:30-11:25
1ST LUNCH 12:03-12:47	1ST LUNCH 11:30-12:00	1ST LUNCH 11:30-12:00	1ST LUNCH 11:30-12:00	1ST LUNCH 11:30-12:00
4B PERIOD 12:03-12:47	4B PERIOD 11:30-12:25	4B PERIOD 11:30-12:25	4B PERIOD 11:30-12:25	4B PERIOD 11:30-12:25
4A PERIOD 12:38-1:22	4A PERIOD 12:05-1:00	4A PERIOD 12:05-1:00	4A PERIOD 12:05-1:00	4A PERIOD 12:05-1:00
2ND LUNCH 12:52-1:22	2ND LUNCH 12:30-1:00	2ND LUNCH 12:30-1:00	2ND LUNCH 12:30-1:00	2ND LUNCH 12:30-1:00
5TH PERIOD 1:27-2:11	5TH PERIOD 1:05-2:00	5TH PERIOD 1:05-2:00	5TH PERIOD 1:05-2:00	5TH PERIOD 1:05-2:00
6TH PERIOD 2:16-3:00	6TH PERIOD 2:05-3:00	6TH PERIOD 2:05-3:00	6TH PERIOD 2:05-3:00	6TH PERIOD 2:05-3:00

*STUDENTS WITH PERIOD 4A HAVE FIRST LUNCH | STUDENTS WITH 4B HAVE SECOND LUNCH

LINCOLN MIDDLE SCHOOL

315 SE CRESTVIEW STREET
PULLMAN, WA 99163

CONTACT

PHONE: (509) 334-3411
EMAIL: LMS-INFO@PSD267.ORG